

Solutions Unlimited



VMC Overview

- ◆ Armed with 16 years of experience.
- ◆ Expertise in Whole HR Gamut.
- ◆ Juxtaposed experiences in all Industries.
- ◆ Client list include MNCs and Large Indian Corporate firms.
- ◆ Team consists of qualified professionals.
- ◆ Delivering Value Added Services.

Branch Offices :- Jammu, Baddi, Ludhiana, Chandigarh, Ambala, Haridwar, Jaipur, Lucknow, Noida, Indore, Mumbai, Pune, Korba, Patna, Jamsaidpur, Calcutta, Raigarha, Bilaspur (Chhastigarh), Hyderabad, Chennai, Banglore

Our Group Of Companies

- ◆ Vega Management & Consultants (Regd.)
- ◆ Delta Security Force (Regd.)

Branch Offices :- Jammu, Baddi, Ludhiana, Chandigarh, Ambala, Haridwar, Jaipur, Lucknow,
Noida, Indore, Mumbai, Pune, Korba, Patna, Jamsaidpur, Calcutta, Raigarha,
Bilaspur (Chhastigarh), Hyderabad, Chennai, Bangalore

Contd. -4-

Core Values

- ◆ Make an earnest endeavor to make a visible difference to client organizations.
- ◆ Protect the confidentiality of our clients.
- ◆ Be sensitive and empathetic to our clients' and candidates' needs.
- ◆ Believes in Crystal Corporate Governance.
- ◆ Demonstrate respect to all.

Branch Offices :- Jammu, Baddi, Ludhiana, Chandigarh, Ambala, Haridwar, Jaipur, Lucknow, Noida, Indore, Mumbai, Pune, Korba, Patna, Jamsaidpur, Calcutta, Raigarha, Bilaspur (Chhastigarh), Hyderabad, Chennai, Banglore

Business Modules

- ◆ Contract/Temp staffing
- ◆ Permanent Staffing
- ◆ Payroll Outsourcing
- ◆ Interim management solutions
- ◆ HR Solutions

Branch Offices :- Jammu, Baddi, Ludhiana, Chandigarh, Ambala, Haridwar, Jaipur, Lucknow, Noida, Indore, Mumbai, Pune, Korba, Patna, Jamsaidpur, Calcutta, Raigarha, Bilaspur (Chhastigarh), Hyderabad, Chennai, Bangalore

Contd. -6-

Our Reach

- Telecom Sector
- Financial Sector
- Pharmaceuticals & Chemicals
- Consumer Durable
- Manufacturing
- Retail Industry
- Information Technology
- Human Resource
- Banking & Insurance
- Hospitality
- ITES

Branch Offices :- Jammu, Baddi, Ludhiana, Chandigarh, Ambala, Haridwar, Jaipur, Lucknow, Noida, Indore, Mumbai, Pune, Korba, Patna, Jamsaidpur, Calcutta, Raigarha, Bilaspur (Chhastigarh), Hyderabad, Chennai, Bangalore

Value Proposition For Client

- Reduction of operation costs and corporate overhead
- Focus on core- competencies
- Effective Time Management
- More effective & efficient HR function
- Eliminate lead time
- Adherence to Statutory compliance
- Flexibility
- Resource Optimization

Branch Offices :- Jammu, Baddi, Ludhiana, Chandigarh, Ambala, Haridwar, Jaipur, Lucknow, Noida, Indore, Mumbai, Pune, Korba, Patna, Jamsaidpur, Calcutta, Raigarha, Bilaspur (Chhastigarh), Hyderabad, Chennai, Bangalore

Legal Compliance

- ◆ Statutory Payouts
- ◆ Statutory Registration
- ◆ Contract Labour License
- ◆ Employee record maintenance
- ◆ Monthly Compliance Report
- ◆ Performance Appraisal
- ◆ Medical Examination

Branch Offices :- Jammu, Baddi, Ludhiana, Chandigarh, Ambala, Haridwar, Jaipur, Lucknow, Noida, Indore, Mumbai, Pune, Korba, Patna, Jamsaidpur, Calcutta, Raigarha, Bilaspur (Chhastigarh), Hyderabad, Chennai, Banglore

Statutory Compliance

Registration No: 6743

Service Tax No: AAJPJ0323JST001

Provident Fund

VMC is registered centrally in Delhi with the PF Commissioner,
Delhi Our PF No. is **DL/31293**

ESIC

VMC is registered under ESIC in Delhi and the no. is 11-10-63097-
101. ESIC sub codes are taken by VMC for branches mentioned below

Mumbai : 11-10-63097-101

Kolkata : 11-10-63097-101

Indore : 11-10-63097-101

Hyderabad : 11-10-63097-101

Chennai : 11-10-63097-101

Jaipur : 11-10-63097-101

Chandigarh : 11-10-63097-101

Lucknow : 11-10-63097-101

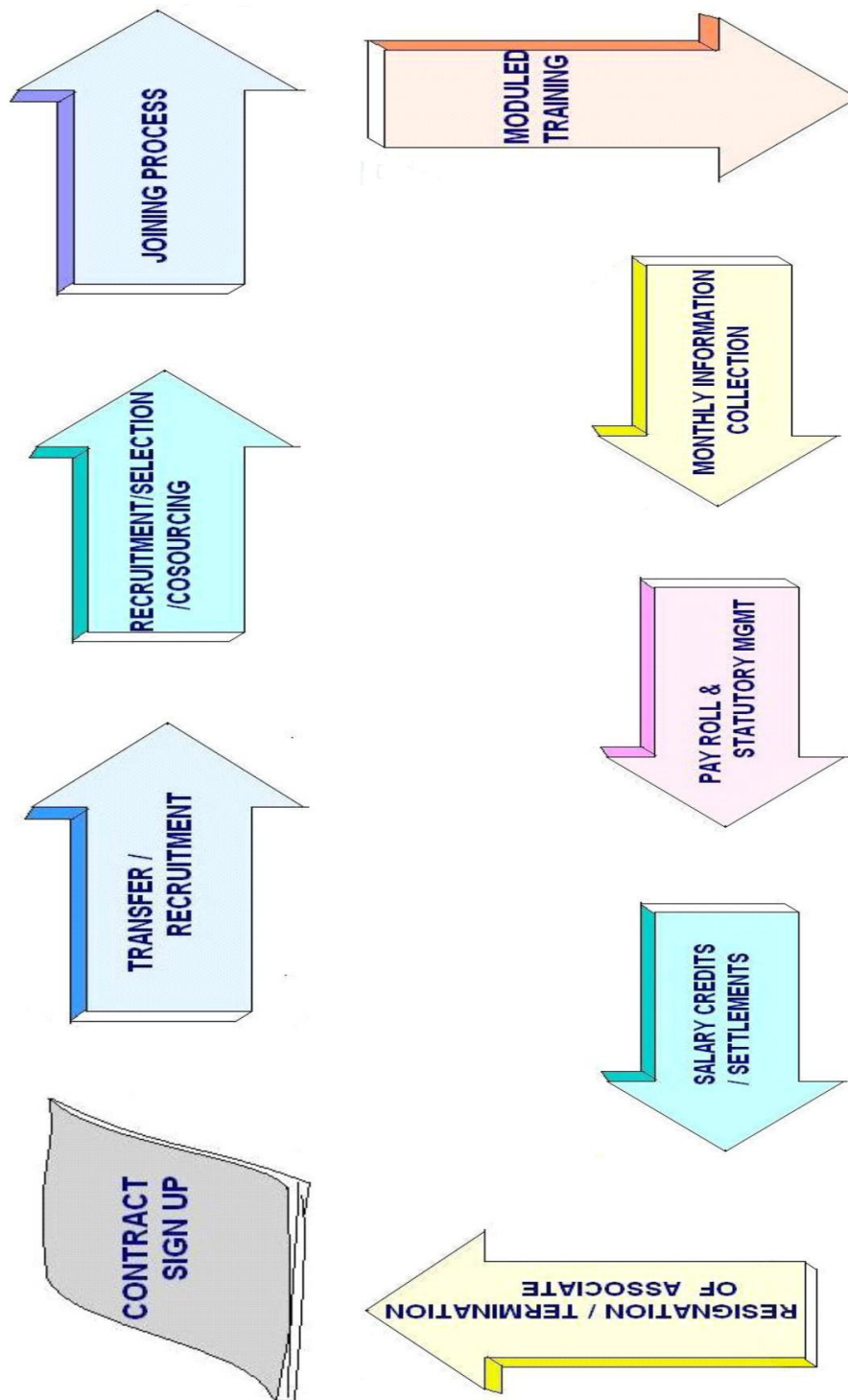
Branch Offices :- Jammu, Baddi, Ludhiana, Chandigarh, Ambala, Haridwar, Jaipur, Lucknow, Noida, Indore, Mumbai, Pune, Korba, Patna, Jamsaidpur, Calcutta, Raigarha, Bilaspur (Chhastigarh), Hyderabad, Chennai, Bangalore

Account Management

- Dedicated team for sourcing, inducting, payroll and compliances
- Account manager available on 24/7 basis
- Monthly MIS.
- Process for monitoring Service Level Agreement (SLA's)
- Availability of Management Team to address specific issue
- Escalation mechanism – Client and VMC

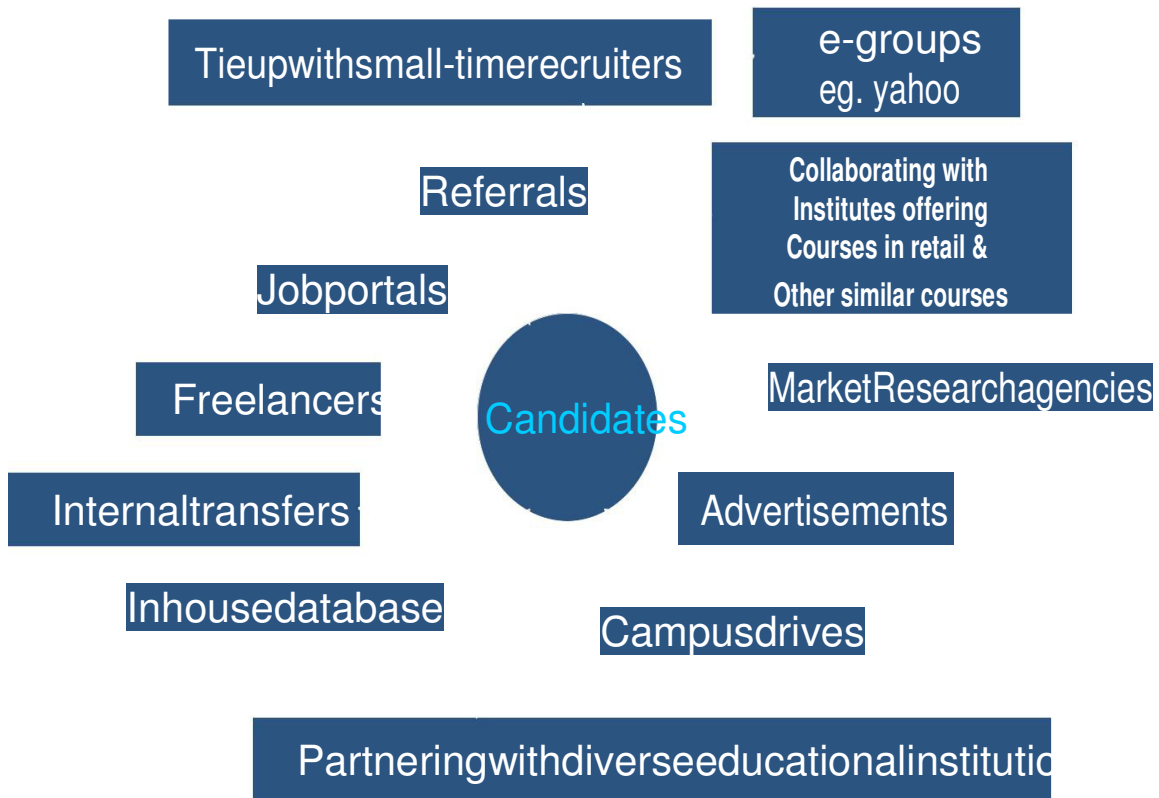
Branch Offices :- Jammu, Baddi, Ludhiana, Chandigarh, Ambala, Haridwar, Jaipur, Lucknow, Noida, Indore, Mumbai, Pune, Korba, Patna, Jamsaidpur, Calcutta, Raigarha, Bilaspur (Chhastigarh), Hyderabad, Chennai, Banglore

Operation Process Overview



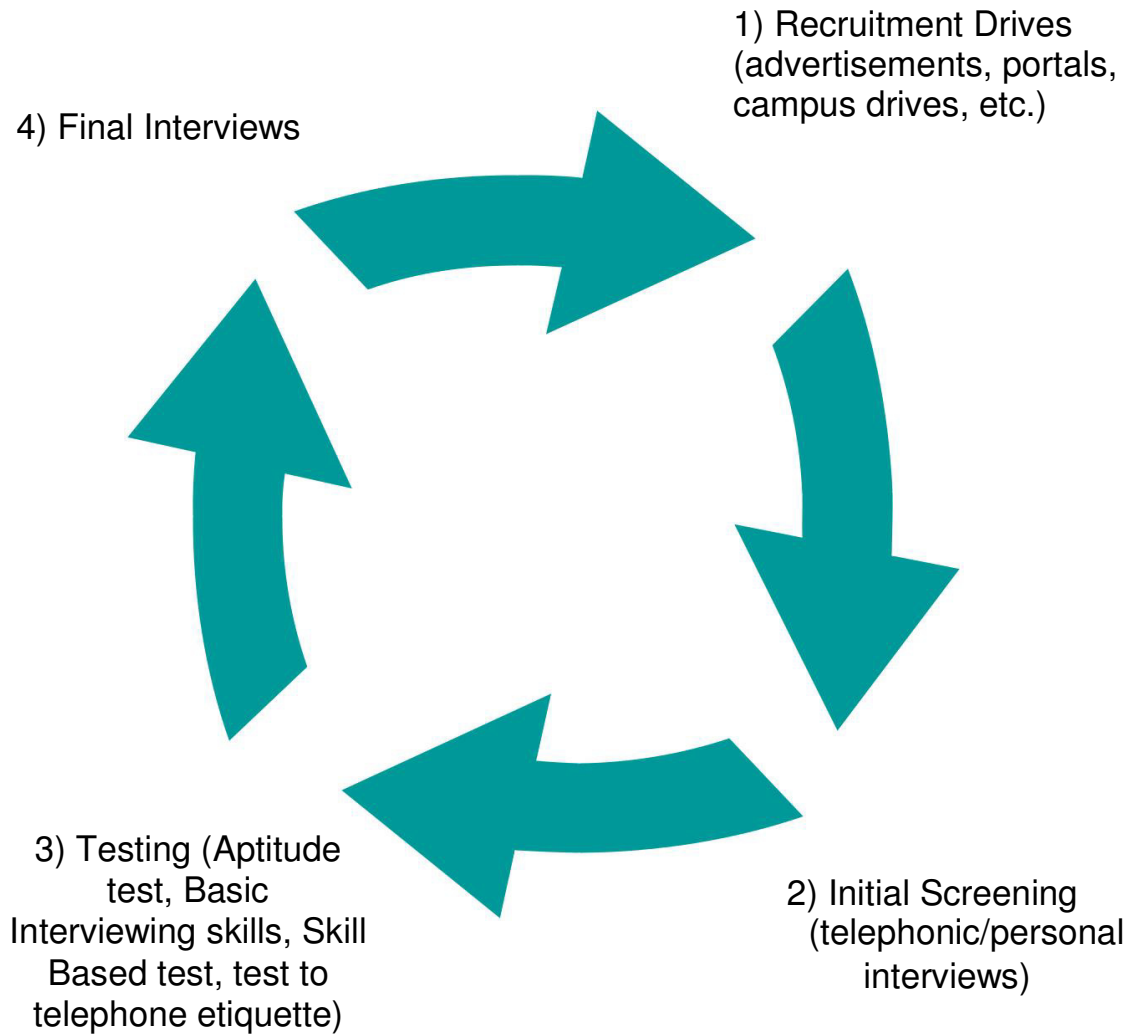
Branch Offices :- Jammu, Baddi, Ludhiana, Chandigarh, Ambala, Haridwar, Jaipur, Lucknow, Noida, Indore, Mumbai, Pune, Korba, Patna, Jamsaidpur, Calcutta, Raigarha, Bilaspur (Chhastigarh), Hyderabad, Chennai, Bangalore

Sourcing Approach



Branch Offices :- Jammu, Baddi, Ludhiana, Chandigarh, Ambala, Haridwar, Jaipur, Lucknow, Noida, Indore, Mumbai, Pune, Korba, Patna, Jamsaidpur, Calcutta, Raigarha, Bilaspur (Chhastigarh), Hyderabad, Chennai, Bangalore

Sourcing Process Flow



Branch Offices :- Jammu, Baddi, Ludhiana, Chandigarh, Ambala, Haridwar, Jaipur, Lucknow, Noida, Indore, Mumbai, Pune, Korba, Patna, Jamsaidpur, Calcutta, Raigarha, Bilaspur (Chhastigarh), Hyderabad, Chennai, Banglore

Service Level Agreement/Service Guarantee

- Single point relationship manager for employee as well as principle employer.
- Religiously followed statutory compliances.
- Induction program to all associates.
- Salary disbursement on agreed date.
- Replacement within 15 working days.
- Monthly Help Desk at client place.
- Tax Work shop

Branch Offices :- Jammu, Baddi, Ludhiana, Chandigarh, Ambala, Haridwar, Jaipur, Lucknow, Noida, Indore, Mumbai, Pune, Korba, Patna, Jamsaidpur, Calcutta, Raigarha, Bilaspur (Chhastigarh), Hyderabad, Chennai, Banglore

Nationwide Presence

- | | |
|--------------|--------------------------|
| Ø Jammu | Ø Delhi |
| Ø Baddi | Ø Hyderabad |
| Ø Ludhiana | Ø Mumbai |
| Ø Ambala | Ø Pune |
| Ø Chandigarh | Ø Korba |
| Ø Haridwar | Ø Patna |
| Ø Jaipur | Ø JamsaidPur |
| Ø Noida | Ø RaiGarha |
| Ø Bangalore | Ø Bilaspur (Chhatisgarh) |
| Ø Calcutta | Ø Lucknow |
| Ø Chennai | Ø Indore |
| Ø Soan | Ø Gurgaon |
| Ø Parwanoo | Ø Ghaziabad |
| Ø Amritsar | Ø Dehradun |
| Ø Kanpur | Ø Noida |
| Ø Rudrapur | Ø Faridabad |
| Ø Allahabad | Ø Manesar |

Branch Offices :- Jammu, Baddi, Ludhiana, Chandigarh, Ambala, Haridwar, Jaipur, Lucknow, Noida, Indore, Mumbai, Pune, Korba, Patna, Jamsaidpur, Calcutta, Raigarha, Bilaspur (Chhastigarh), Hyderabad, Chennai, Bangalore

Why VMC

- ◆ Experience for more than 16 years
- ◆ Group having more than 90 professionals across industries from reputed Management Institutes.
- ◆ PAN India Presence.
- ◆ Single point contact for each client across locations. (Client Relationship Manager)
- ◆ Strict Adherence to all Statutory Compliances.
- ◆ Domain Expertise in Various Industry Verticals.
- ◆ Substantial Pre-Screened Talent Pool.
- ◆ Quality Processes.
- ◆ Technology Driven Organization.
- ◆ Tie-ups with all the major Job Sites.

Branch Offices :- Jammu, Baddi, Ludhiana, Chandigarh, Ambala, Haridwar, Jaipur, Lucknow, Noida, Indore, Mumbai, Pune, Korba, Patna, Jamsaidpur, Calcutta, Raigarha, Bilaspur (Chhastigarh), Hyderabad, Chennai, Bangalore

Pride Fact

We recognize the fearless new age Super Heroes waiting to 'leave their footprints on the sands of a globally hyper competitive market place', those who have dared to dream beyond the boundaries and built their corporations with core competencies and those who at the threshold of breaking into new initiatives have achieved success.

We aim at recognizing people; organizations and institutions that have always been at the vanguard of change the awards would be a benchmark to signify progress, in the changing world of business.

We salute the Super Achievers and those professionals who have made a difference to the corporations they are working with.

Set a Benchmark in Excellence for others to emulate and help drive global standards for a competitive HR Strategy

Recognize those who have the courage to make change happen.

Branch Offices :- Jammu, Baddi, Ludhiana, Chandigarh, Ambala, Haridwar, Jaipur, Lucknow, Noida, Indore, Mumbai, Pune, Korba, Patna, Jamsaidpur, Calcutta, Raigarha, Bilaspur (Chhastigarh), Hyderabad, Chennai, Bangalore

Major Clients

1. Air Force Station
 2. Anish India Export
 3. DHL Dhanzs Lemuir Ltd
 4. Echha Exports
 5. General Overseas Coporation
 6. Kaweri Warehousing Pvt. Ltd.
 7. International Textiles
 8. V-Trans (India) Limited
 9. M.G Motors
 10. Media Transasia
 11. Mehra Bandhu Creations
 12. Nobel Craft
 13. Munjal Show
 14. Universal Electronics
 15. Versatile Export
 16. Canyum Construction Pvt Ltd
 17. M.D Oxygen
 18. Hari Assary
 19. GST IT Services Pvt. Ltd
 20. Big Flix (Reliance Group)
 21. Bahri Estate (P). Ltd
 22. UFL (P) Ltd
 23. AV Global Corporation Pvt. Ltd
 24. Institute of Management & Technology
 25. Sant Janki Prasad Industries
 26. AFL Logistics LTD.
 27. Modern Hightech Products
 28. Patina Designs Pvt. Ltd
 29. Home Care (India) Pvt. Ltd
 30. Ganga Overseas
 31. Lyra Industrials
 32. Intex International
 33. Vishal Retail Limited
 34. Kohli Soft Drinks Pvt. Ltd
 35. Groupsoft
 36. Enchante Jewellery
 37. Fusion Consulting Services
 38. Reyenders Label Printing Pvt. Ltd
 39. Metaltech India Ltd
-

Branch Offices :- Jammu, Baddi, Ludhiana, Chandigarh, Ambala, Haridwar, Jaipur, Lucknow,
Noida, Indore, Mumbai, Pune, Korba, Patna, Jamsaidpur, Calcutta, Raigarha,
Bilaspur (Chhastigarh), Hyderabad, Chennai, Banglore

Contd. -19-

Major Clients

- | | |
|-------------------------------------|----------------------------|
| 40. M.G. Motors | 56. Mewat Grit Udyog |
| 41. Rajdhani Flora & Infrastructure | 57. Jai Hanuman Grit Udyog |
| 42. U-FoamBBS Apparels | 58. Gati Limited |
| 43. Swift Hand Craft | 59. Fed Ex Express |
| 44. B.P.S. Mahila Vishwavidalaya | 60. Snapdeal |
| 45. Jay Bharat Maruti Ltd | 61. Delhivery Pvt. Ltd. |
| 46. BLR India Pvt. Limited | 62. JV Express |
| 47. RT Outsourcing Services Ltd | 63. Sahara Q Shop |
| 48. Delhi Global Business School | 64. Jabong |
| 49. B.P.S Mahila University | 65. Aramex |
| 50. TNT India Pvt. Ltd | 66 Ecom |
| 51. Y J Party Park 'P' Ltd | 67 Xpressbees |
| 52. Jaggi Residence | 68 Bluedart |
| 53. International Textile | 69 Reliance India Ltd. |
| 54. Relogistics India Pvt. Ltd | |
| 55. Fuel Testing Laboratory | |
-

Branch Offices :- Jammu, Baddi, Ludhiana, Chandigarh, Ambala, Haridwar, Jaipur, Lucknow,
Noida, Indore, Mumbai, Pune, Korba, Patna, Jamsaidpur, Calcutta, Raigarha,
Bilaspur (Chhastigarh), Hyderabad, Chennai, Banglore

Contd. -20-

Contact Us

Corporate Office:

34, Ocean Commercial Complex,
Kapashera, New Delhi-110 037.
Ph: 91-11-2506 0664/011-2506 0665.
Mobile-09871590109. Fax: 011-2506 666.

Contact Person:

Director : R. K Jaglan

Mobile: 09810047651, Extn-102

GM-Ops: Col. Surender Singh

Mobile: 08130920004, Extn-105

Manager Operation : Arun Chaubey

Mobile: 08130360004, Extn.-104

Field Officer: Ajay

Mobile: 08130910004, Extn-106

Field Officer: Kunal

Mobile: 08130380004, Extn-106

Field Officer: Montoo

Mobile: 08130370004, Extn-106

HR Head: Nitesh Kumar

nitesh@vmcoutsorce.com

Mobile: 08130310004, Extn-103

Accounts Head: Sandeep Kumar

sandeep@vmcoutsorce.com

Mobile: 08130350004



E-mail :-hra@vmcoutsorce.com

E-mail: vmcoutsorce@gmail.com

Branch Offices :- Jammu, Baddi, Ludhiana, Chandigarh, Ambala, Haridwar, Jaipur, Lucknow,
Noida, Indore, Mumbai, Pune, Korba, Patna, Jamsaidpur, Calcutta, Raigarha,
Bilaspur (Chhastigarh), Hyderabad, Chennai, Bangalore

Hearty Thanks From



VMC 828 For Total Outsourcing Solutions

Vega Management & Consultants (Regd.)

Branch Offices :- Jammu, Baddi, Ludhiana, Chandigarh, Ambala, Haridwar, Jaipur, Lucknow,
Noida, Indore, Mumbai, Pune, Korba, Patna, Jamsaidpur, Calcutta, Raigarha,
Bilaspur (Chhastigarh), Hyderabad, Chennai, Bangalore